

Sonoma County Hazard Mitigation Plan

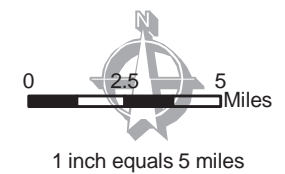
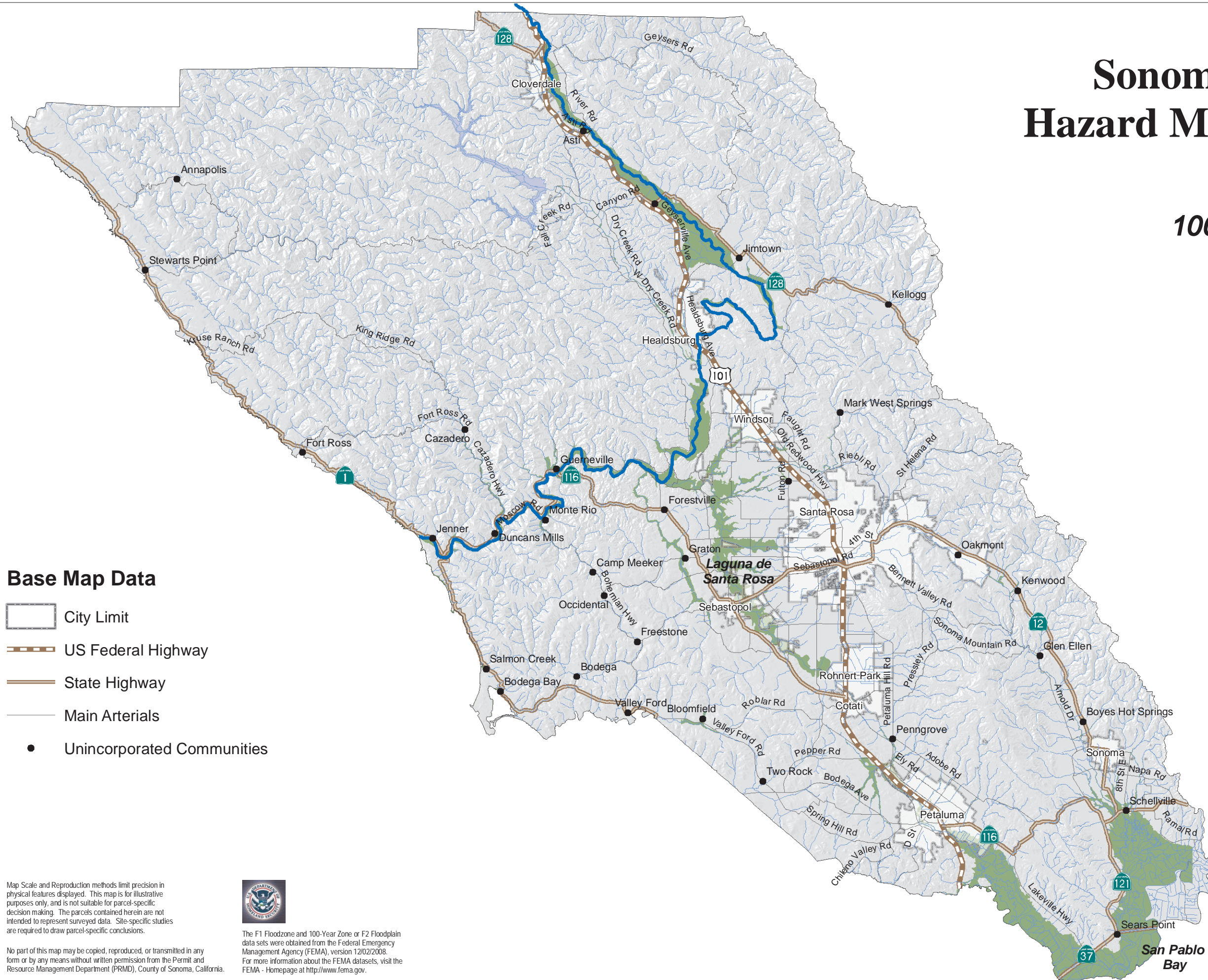
Figure 8.5
100-Year Flood Zone

Flood Zone Data

- 100-Year Zone
- Russian River
- Streams

Base Map Data

- City Limit
- US Federal Highway
- State Highway
- Main Arterials
- Unincorporated Communities



County of Sonoma

Permit and Resource Management Department

2550 Ventura Avenue, Santa Rosa, California 95403
707-565-1900 FAX 707-565-1103



Map Scale and Reproduction methods limit precision in physical features displayed. This map is for illustrative purposes only, and is not suitable for parcel-specific decision making. The parcels contained herein are not intended to represent surveyed data. Site-specific studies are required to draw parcel-specific conclusions.



The F1 Floodzone and 100-Year Zone or F2 Floodplain data sets were obtained from the Federal Emergency Management Agency (FEMA), version 12/02/2008. For more information about the FEMA datasets, visit the FEMA - Homepage at <http://www.fema.gov>.

No part of this map may be copied, reproduced, or transmitted in any form or by any means without written permission from the Permit and Resource Management Department (PRMD), County of Sonoma, California.